

# eOBE Legacy System

## Background Research:

- This eOBE system is a legacy system
- Its steps are cumbersome and complicated
- Optimize it.

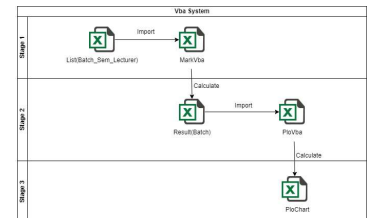
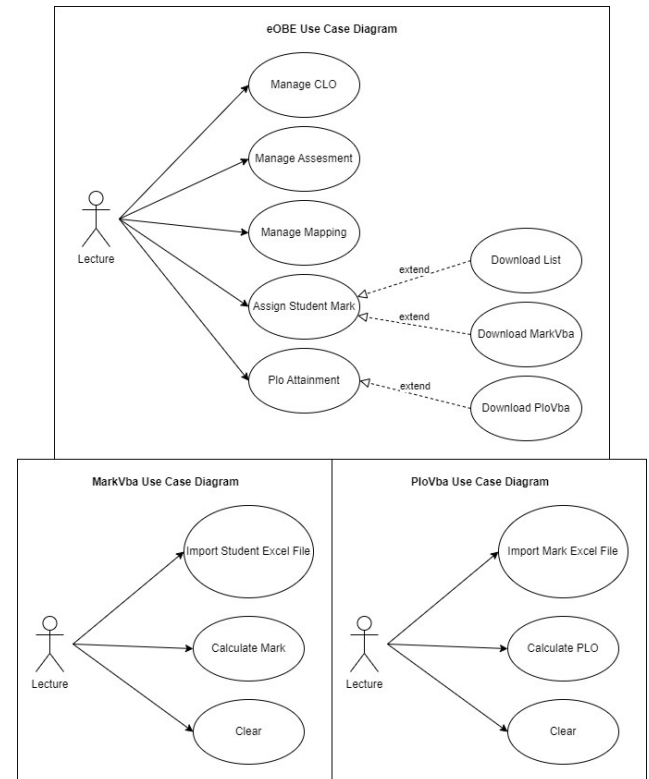
## Objective:

- Reduce unnecessary steps and functions
- Develop a unified and reusable calculator using Excel VBA
- Integrate and present the final results

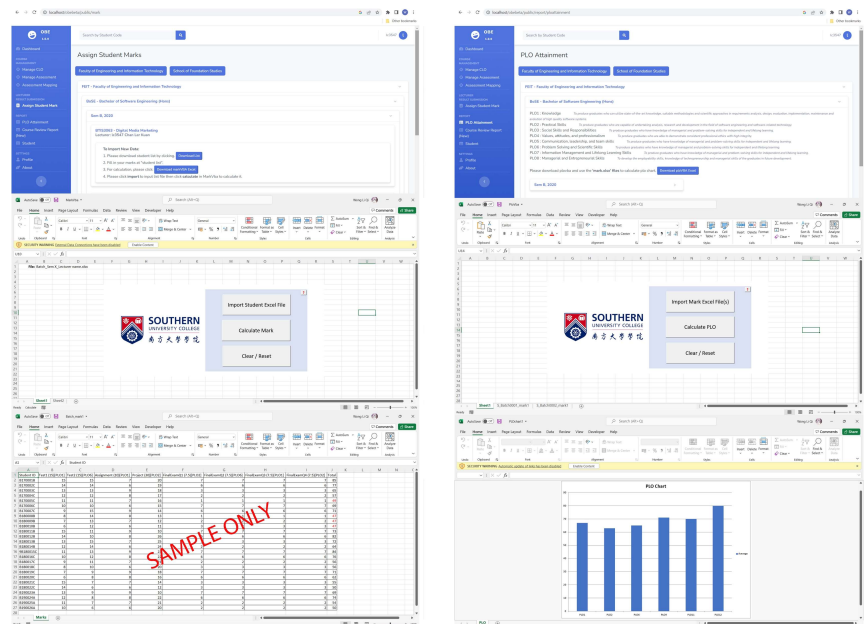
## Technology:

- Laravel
- MySQL
- Excel VBA

## Use Case:



## Prototype:



Three screenshots showing the system interface. The first shows the 'Assign Student Marks' form with a table of student data. The second shows the 'PLO Attainment' form with a table of PLO data. The third shows the 'Plo Chart' displaying a bar chart of PLO scores. A red 'SAMPLE ONLY' watermark is overlaid on the bottom screenshot.

## Conclusion:

- Simple and convenient steps to realize the calculation of students' grades.
- Quickly integrate PLO averages for the same semester and department.

